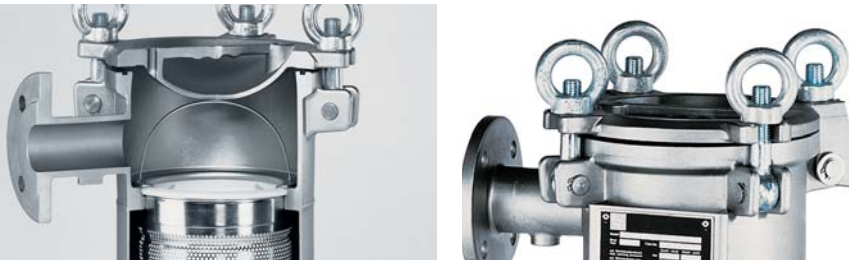


# SIDELINE™

## SIDELINE™ Filter Housings

Mid-priced filter housings for most applications.

- A SIDELINE housing is a solid, investment-cast filter in the medium cost range.
- A SIDELINE housing offers a standard eye-bolt closure and a choice of 2" or 3" ANSI flanged connections as standard.
- For filter bags sizes 01, 02, 03 and 04.
- Type 316 stainless steel construction means superior corrosion resistance and consistent performance, year after year. A smooth, bead-blasted finish, coupled with SIDELINE's minimum 2-weld design, makes it easy to completely clean the interior of the housing.
- All SIDELINE housings come with an exclusive Five Year Warranty and the ASME code UM stamp.
- SIDELINE housings... for all heavy duty industrial applications.



### These value added features:

Side inlet with evacuation cover

Cover opening direction can be changed in the field

Compression bag hold down

Integral cover handle

### Give these benefits

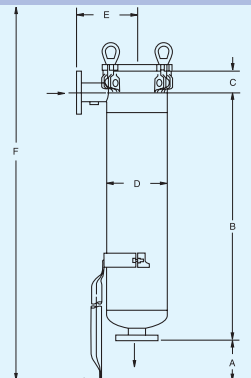
Less messy bag changing, no spillage of unfiltered liquid.

Easily adapts to different piping layouts. Accommodates walls, posts or other obstructions.

360 degree sealing of the filter bag to the housing.

Ergonomical and easy to open

See page 5 for dimensions.



# TECHNICAL DATA

| SERIES              | Type*                       | No. Of Bags |    | Bag Size | Max. Flow 2 GPM | Material 1 | Max. Allowable Pressure |      | Housing Volume |        | Housing Weight | Inlet Outlet Connection | Type  | Vent 4 | Dimensions In Inches |       |       |       |   |  |
|---------------------|-----------------------------|-------------|----|----------|-----------------|------------|-------------------------|------|----------------|--------|----------------|-------------------------|-------|--------|----------------------|-------|-------|-------|---|--|
|                     |                             | PSI         | °F |          |                 |            | GAL                     | LBS  | IN             | A      |                |                         |       |        | B                    | C     | D     | E     | F |  |
| MAXILINE<br>VMBF SE | VMBF-0402-AB10-040A-UT-11SE | 4           | 2  | 400      | SS              | 150        | 250                     | 69   | 484            | 4"     | Flanged        | 1"                      | 6.00  | 20.00  | 10.50                | 22.00 | 15.75 | 68.00 |   |  |
|                     | VMBF-0602-AB10-060A-UT-11SE | 6           | 2  | 900      | SS              | 150        | 250                     | 139  | 983            | 6"     | Flanged        | 1"                      | 7.25  | 20.00  | 13.00                | 31.50 | 20.75 | 80.00 |   |  |
|                     | VMBF-0802-AB10-080A-UT-11SE | 8           | 2  | 1750     | SS              | 150        | 250                     | 141  | 1023           | 8"     | Flanged        | 1"                      | 8.25  | 19.00  | 12.80                | 31.50 | 20.50 | 80.00 |   |  |
| MAXILINE<br>MBF HE  | MBF-0302-AB10-030A-UT-11HE  | 3           | 2  | 230      | SS or CS        | 150        | 250                     | 40   | 245            | 3"     | Flanged        | 1"                      | 6.00  | 22.50  | 6.40                 | 18.00 | 12.75 | 60.00 |   |  |
|                     | MBF-0402-AB10-040A-UT-11HE  | 4           | 2  | 400      | SS or CS        | 150        | 250                     | 69   | 380            | 4"     | Flanged        | 1"                      | 6.00  | 22.20  | 7.40                 | 24.00 | 16.00 | 68.40 |   |  |
|                     | MBF-0602-AB10-060A-UT-11HE  | 6           | 2  | 900      | SS or CS        | 150        | 250                     | 90   | 440            | 6"     | Flanged        | 1"                      | 7.50  | 19.50  | 9.03                 | 24.00 | 16.50 | 68.80 |   |  |
|                     | MBF-0802-AB10-080A-UT-11HE  | 8           | 2  | 1750     | SS or CS        | 150        | 250                     | 116  | 644            | 8"     | Flanged        | 1"                      | 8.25  | 19.00  | 6.48                 | 30.00 | 20.50 | 79.50 |   |  |
| MAXILINE<br>MBF HD  | MBF-0302-AB10-030A-UT-11HD  | 3           | 2  | 230      | SS or CS        | 150        | 250                     | 40   | 255            | 3"     | Flanged        | 1"                      | 6.00  | 22.50  | 6.40                 | 18.00 | 12.75 | 66.00 |   |  |
|                     | MBF-0402-AB10-040A-UT-11HD  | 4           | 2  | 400      | SS or CS        | 150        | 250                     | 54   | 390            | 4"     | Flanged        | 1"                      | 6.00  | 22.20  | 7.80                 | 24.00 | 16.00 | 68.00 |   |  |
|                     | MBF-0602-AB10-060A-UT-11HD  | 6           | 2  | 900      | SS or CS        | 150        | 250                     | 95   | 460            | 6"     | Flanged        | 1"                      | 7.00  | 20.00  | 9.80                 | 26.00 | 18.50 | 68.00 |   |  |
|                     | MBF-0802-AB10-080A-UT-11HD  | 8           | 2  | 1750     | SS or CS        | 150        | 250                     | 140  | 655            | 8"     | Flanged        | 1"                      | 8.25  | 19.00  | 10.78                | 30.00 | 20.50 | 66.00 |   |  |
|                     | MBF-1002-AB10-100A-UT-11HD  | 10          | 2  | 2600     | SS or CS        | 150        | 250                     | 215  | 1400           | 10"    | Flanged        | 1"                      | 10.00 | 17.00  | 13.30                | 36.00 | 24.50 | 70.00 |   |  |
|                     | MBF-1202-AB10-100A-UT-11HD  | 12          | 2  | 2600     | SS or CS        | 150        | 250                     | 245  | 1500           | 10"    | Flanged        | 1"                      | 10.00 | 17.00  | 13.80                | 38.00 | 24.50 | 72.00 |   |  |
|                     | MBF-1402-AB10-100A-UT-11HD  | 14          | 2  | 2600     | SS or CS        | 150        | 250                     | 311  | 1800           | 10"    | Flanged        | 1"                      | 11.50 | 20.00  | 11.81                | 42.00 | 28.00 | 76.00 |   |  |
|                     | MBF-1602-AB10-120A-UT-11HD  | 16          | 2  | 3500     | SS or CS        | 150        | 250                     | 317  | 1875           | 12"    | Flanged        | 1"                      | 11.50 | 20.00  | 11.81                | 42.00 | 28.00 | 76.00 |   |  |
|                     | MBF-1802-AB10-120A-UT-11HD  | 18          | 2  | 3500     | SS or CS        | 150        | 250                     | 446  | 2420           | 12"    | Flanged        | 1"                      | 12.50 | 22.00  | 10.69                | 48.00 | 31.00 | 88.00 |   |  |
|                     | MBF-2002-AB10-140A-UT-11HD  | 20          | 2  | 4500     | SS or CS        | 150        | 250                     | 454  | 2505           | 14"    | Flanged        | 1"                      | 12.50 | 22.00  | 10.69                | 48.00 | 31.00 | 88.00 |   |  |
|                     | MBF-2202-AB10-140A-UT-11HD  | 22          | 2  | 4500     | SS or CS        | 150        | 250                     | 570  | 2730           | 14"    | Flanged        | 1"                      | 12.50 | 22.00  | 13.44                | 52.00 | 33.00 | 92.00 |   |  |
|                     | MBF-2402-AB10-140A-UT-11HD  | 24          | 2  | 4500     | SS or CS        | 150        | 250                     | 570  | 2800           | 14"    | Flanged        | 1"                      | 12.50 | 22.00  | 13.44                | 52.00 | 33.00 | 92.00 |   |  |
| TOPLINE             | TBF-0101-AB10-020A          | 1           | 1  | 90       | SS or CS        | 150        | 400                     | 3.5  | 80             | 2"     | Flanged        | 1/4"                    | 17.70 | 15.50  | 1.93                 | 8.62  | 12.08 | 53.50 |   |  |
|                     | TBF-0102-AB10-020A          | 1           | 2  | 180      | SS or CS        | 150        | 400                     | 7.25 | 93             | 2"     | Flanged        | 1/4"                    | 17.70 | 31.00  | 1.93                 | 8.62  | 12.08 | 84.25 |   |  |
|                     | TBF-0102-AB10-020R-M32B0    | 1           | 2  | 180      | SS              | 150        | 400                     | 7.25 | 93             | 2"     | Tri-Clamp      | 1/4"                    | 15.80 | 32.78  | 1.93                 | 8.62  | 12.83 | 84.25 |   |  |
| SIDELINE            | SBF-0101-AB10-020A          | 1           | 1  | 90       | SS              | 150        | 400                     | 4.75 | 84             | 2"     | Flanged        | 1/4"                    | 17.70 | 19.50  | 3.15                 | 8.62  | 8.66  | 54.70 |   |  |
|                     | SBF-0101-AB10-030A          | 1           | 1  | 90       | SS              | 150        | 400                     | 4.75 | 84             | 3"     | Flanged        | 1/4"                    | 17.70 | 19.50  | 3.15                 | 8.62  | 8.66  | 54.70 |   |  |
|                     | SBF-0102-AB10-020A          | 1           | 2  | 180      | SS              | 150        | 400                     | 8.5  | 102            | 2"     | Flanged        | 1/4"                    | 17.70 | 35.00  | 3.15                 | 8.62  | 8.66  | 85.50 |   |  |
|                     | SBF-0102-AB10-030A          | 1           | 2  | 180      | SS              | 150        | 400                     | 8.5  | 102            | 3"     | Flanged        | 1/4"                    | 17.70 | 35.00  | 3.15                 | 8.62  | 8.66  | 85.50 |   |  |
|                     | SBF-0103-AB21-015N          | 1           | 3  | 25       | SS              | 300        | 225                     | 0.5  | 26             | 1 1/2" | NPT            | 1/4"                    | na    | 11.77  | 2.95                 | 4.50  | 3.50  | 21.80 |   |  |
|                     | SBF-0104-AB21-015N          | 1           | 4  | 50       | SS              | 300        | 225                     | 0.7  | 29             | 1 1/2" | NPT            | 1/4"                    | na    | 17.87  | 2.95                 | 4.50  | 3.50  | 33.90 |   |  |
| DUOLINE             | TOPLINE                     | 2           | 2  | 180      | SS or CS        | 150        | 250                     | 16   | 240            | 2"     | Flanged        | 1/4"                    | 17.70 | 24.50  | 1.93                 | 8.62  | 37.45 | 84.25 |   |  |
|                     | SIDELINE                    | 2           | 2  | 180      | SS              | 150        | 250                     | 16   | 300            | 2"     | Flanged        | 1/4"                    | 17.70 | 27.50  | 3.15                 | 8.62  | 30.82 | 85.50 |   |  |
|                     | SIDELINE                    | 2           | 2  | 180      | SS              | 150        | 250                     | 17   | 330            | 3"     | Flanged        | 1/4"                    | 17.70 | 27.50  | 3.15                 | 8.62  | 33.32 | 85.50 |   |  |
|                     | FLOWLINE                    | 2           | 2  | 180      | SS or CS        | 150        | 250                     | 15   | 200            | 2"     | Flanged        | 1/4"                    | 17.70 | 28.44  | 3.34                 | 7.68  | 37.45 | 85.50 |   |  |
| MODULELINE          | TOPLINE                     | 1+1         | 2  | 360      | SS or CS        | 150        | 250                     | 16   | 230            | 2"     | Flanged        | 1/4"                    | 17.70 | 24.50  | 1.93                 | 8.62  | 34.32 | 84.25 |   |  |
|                     | SIDELINE                    | 1+1         | 2  | 360      | SS              | 150        | 250                     | 16   | 230            | 2"     | Flanged        | 1/4"                    | 17.70 | 27.50  | 3.15                 | 8.62  | 27.44 | 85.50 |   |  |
|                     | SIDELINE                    | 1+1         | 2  | 360      | SS              | 150        | 250                     | 17   | 300            | 3"     | Flanged        | 1/4"                    | 17.70 | 27.00  | 3.15                 | 8.62  | 29.70 | 85.50 |   |  |
|                     | FLOWLINE                    | 1+1         | 2  | 360      | SS or CS        | 150        | 250                     | 15   | 170            | 2"     | Flanged        | 1/4"                    | 17.70 | 28.44  | 3.34                 | 7.68  | 26.64 | 85.50 |   |  |
| POLYLINE            | PBF-0101-PO10-020A          | 1           | 1  | 50       | PPL             | 150        | 70                      | 6.6  | 55             | 2"     | Flanged        | 1/4"                    | 3.26  | 20.75  | 3.38                 | 10.35 | 8.50  | 60.00 |   |  |
|                     | PBF-0101-PO10-020N          | 1           | 1  | 50       | PPL             | 150        | 70                      | 6.6  | 51             | 2"     | NPT            | 1/4"                    | 3.26  | 20.75  | 3.38                 | 10.35 | 6.14  | 60.00 |   |  |
|                     | PBF-0102-PO10-020A          | 1           | 2  | 100      | PPL             | 150        | 70                      | 9.5  | 68             | 2"     | Flanged        | 1/4"                    | 3.26  | 36.75  | 3.38                 | 10.35 | 8.50  | 76.00 |   |  |
|                     | PBF-0102-PO10-020N          | 1           | 2  | 100      | PPL             | 150        | 70                      | 9.5  | 64             | 2"     | NPT            | 1/4"                    | 3.26  | 36.75  | 3.38                 | 10.35 | 6.14  | 76.00 |   |  |
|                     | PBF-0102-PF07-020A          | 1           | 2  | 100      | PVDF            | 100        | 80                      | 9.5  | 100            | 2"     | Flanged        | 1/4"                    | 3.26  | 36.00  | 3.88                 | 10.35 | 8.50  | 75.25 |   |  |
|                     | D-PBF-0101-PO10-020A        | 1+1         | 1  | 50       | PPL/CPVC        | 150        | 70                      | 14.5 | 162            | 2"     | Flanged        | 1/4"                    | 6.10  | 39.04  | 3.88                 | 10.35 | 30.00 | 75.10 |   |  |
|                     | D-PBF-0101-PO10-020N        | 1+1         | 2  | 100      | PPL/CPVC        | 150        | 70                      | 20.6 | 190            | 2"     | Flanged        | 1/4"                    | 6.10  | 55.04  | 3.88                 | 10.35 | 30.00 | 91.10 |   |  |
| FLOWLINE            | FBF-0101-AB10-020A          | 1           | 1  | 90       | SS or CS        | 150        | 250                     | 4    | 30             | 2"     | Flanged        | 1/4"                    | 17.70 | 20.75  | 3.34                 | 7.68  | 6.70  | 54.90 |   |  |
|                     | FBF-0101-AB10-020N          | 1           | 1  | 90       | SS or CS        | 150        | 250                     | 4    | 30             | 2"     | NPT            | 1/4"                    | 17.70 | 19.64  | 3.34                 | 7.68  | 5.37  | 54.90 |   |  |
|                     | FBF-0102-AB10-020A          | 1           | 2  | 180      | SS or CS        | 150        | 250                     | 7    | 43             | 2"     | Flanged        | 1/4"                    | 17.70 | 36.31  | 3.34                 | 7.68  | 6.70  | 85.90 |   |  |
|                     | FBF-0102-AB10-020N          | 1           | 2  | 180      | SS or CS        | 150        | 250                     | 7    | 43             | 2"     | NPT            | 1/4"                    | 17.70 | 35.19  | 3.34                 | 7.68  | 5.37  | 85.70 |   |  |
| ECOLINE             | EBF-0101-AB10-020N          | 1           | 1  | 90       | SS              | 100        | 250                     | 4    | 25             | 2"     | NPT            | 1/4"                    | na    | 19.64  | 3.24                 | 7.68  | 5.37  | 37.00 |   |  |
|                     | EBF-0102-AB10-020N          | 1           | 2  | 180      | SS              | 100        | 250                     | 7    | 38             | 2"     | NPT            | 1/4"                    | na    | 35.19  | 3.24                 | 7.68  | 5.37  | 68.00 |   |  |
|                     | EBF-0103-AB10-015N          | 1           | 3  | 25       | SS              | 150        | 250                     | 0.5  | 9              | 1 1/2" | NPT            | 1/4"                    | na    | 11.77  | 2.78                 | 4.50  | 3.50  | 22.45 |   |  |
|                     | EBF-0104-AB10-015N          | 1           | 4  | 50       | SS              | 150        | 250                     | 0.7  | 11             | 1 1/2" | NPT            | 1/4"                    | na    | 17.87  | 2.78                 | 4.50  | 3.50  | 33.84 |   |  |

1) SS = Austenitic Stainless Steel SS 316 and CF8M or better  
 2) Maximum theoretical flow based on water viscosity, bag specific  
 3) Dimensions for reference only and approximate. Exact dimensions for installation purposes available on request.  
 4) For details, see available product specific data sheet

\* Type number is for stainless steel construction. Change AB to CS for carbon steel.  
 \*\* Depending on seal material

| Product Codes             |   |  |  |  |   |  |   |
|---------------------------|---|--|--|--|---|--|---|
| D                         | MBF   | 04   | 02   | AC   | 10  | 050  | D   |
| D-DUOLINE<br>M-MODULELINE | VMBF-MAXILINE<br>MBF-MAXILINE<br>TBF-TOPLINE<br>SBF-SIDELINE<br>PBF-POLYLINE<br>FBF-FLOWLINE<br>EBF-ECOLINE | No. of bags<br>01, 02,<br>04, 08,<br>12, 16,<br>20, 24 | Bag Size<br>01-short 7"<br>02-long 7"<br>03-short 4"<br>04-long 4" | Material<br>AB-SS316<br>CS-Carbon Steel<br>PO-Polypropylene<br>PF-PVDF | Pressure rating<br>10-150 psi<br>21-300 psi | Connection Size<br>050-1/2"<br>010-1"<br>012-1 1/4"<br>015-1 1/2"<br>020-2"<br>Up to 140-14" | Connection Type<br>A-ANSI Flange<br>N-NPT Female Thread |