



Variflow® HT

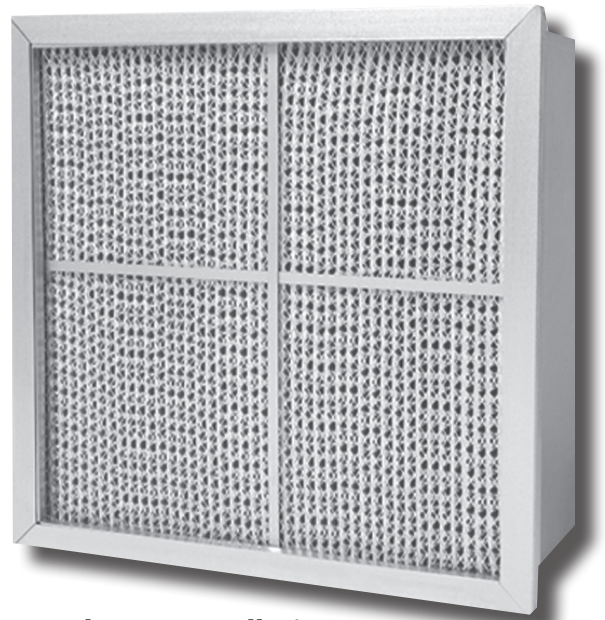
High-Efficiency Rigid Cell Filters for High Temperature Applications

Variflow® HT filters are designed to provide high filtration efficiency in high temperature applications. Three temperature ranges are available (500°F, 750°F and 900°F) to meet the operating requirements of any system.

- High-efficiency microglass paper media
- Three efficiencies MERV 14, 13 and 11
- Three temperature ranges - 500°F, 750°F and 900°F
- Completely rigid, metal box design
- Cross braces and faceguards on both sides
- 12" and 6" depths
- 24-gauge aluminized steel cell sides
- High temperature glass wrap sealant
- Single-header construction (standard) Double-header (optional)
- High temperature gasket on air leaving side

Heavy Duty Construction

The cell sides are constructed of aluminized steel which will not flake off or become brittle at elevated temperatures. Cross braces and expanded metal faceguards on the air entering and leaving sides provide additional support and rigidity. Corrugated aluminum separators with rolled edges maintain proper spacing between pleats at all air flow rates and operating temperatures.



Leak Free Installation

A high temperature gasket on the air leaving side seals the filter in its holding frame and prevents bypass. A high temperature microglass sealant is wrapped around the entire perimeter of the media pack to prevent leakage.

Contains No Silicone

Variflow HT filters contain no silicone, making them ideal for drying ovens on paint booth systems where silicone could cause a contamination problem.

Model Number	Nominal Size (In.) (WxHxD)	Air Flow Capacity (CFM) @500 FPM	Initial Resistance @ Rated AirFlow (In. W.G.)			Recommended Final Resistance (In. W.G.)	Media Area (Ft ²)
			MERV 14	MERV 13	MERV 11		
VMB-*04-HT500	24 x 24 x 12	2000	.65	.55	.40	1.20	124
VMB-*04-HT500	20 x 20 x 12	1400	.65	.55	.40	1.20	83
VMB-*04-HT500	12 x 24 x 12	1000	.65	.55	.40	1.20	36
VMB-*04-HT750	24 x 24 x 12	2000	.68	.60	.46	1.20	139
VMB-*04-HT750	20 x 20 x 12	1400	.68	.60	.46	1.20	92
VMB-*04-HT750	12 x 24 x 12	1000	.68	.60	.46	1.20	75
VMB-*04-HT900	24 x 24 x 12	2000	.71	.65	.58	1.20	183
VMB-*04-HT900	20 x 20 x 12	1400	.71	.65	.58	1.20	125
VMB-*04-HT900	12 x 24 x 12	1000	.71	.65	.58	1.20	84

* Filter Efficiency (9 = MERV 14, 8 = MERV 13, 6 = MERV 11)

1. Actual face dimensions are 5/8" less than nominal (24" x 24" is 23-3/8" x 23-3/8"). Actual 12" depth is 11-1/2".
2. Variflow HT should be installed with the pleats running vertical.
3. Do not exceed rated face velocity (500 FPM) or final resistance (1.2" W.G.) in high temperature applications.
4. All performance data is based on the ASHRAE 52.2-2007 Test Method at a test velocity of 496 FPM for 24x24x12 nominal size filters.

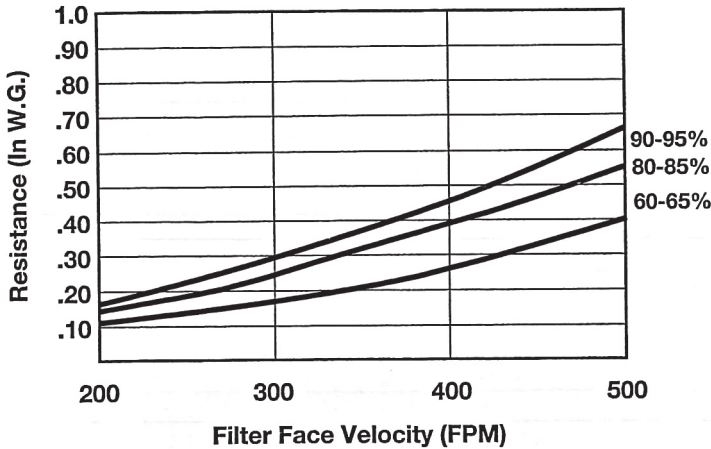
Variflow® HT

High Efficiency Rigid Cell Filters for High Temperature Applications

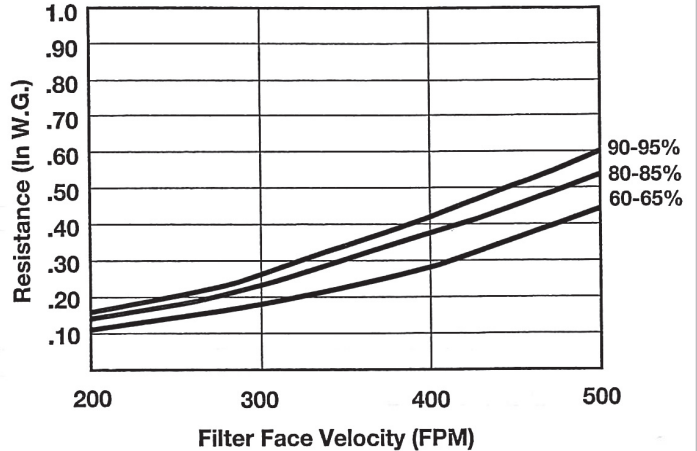


Operating Data:

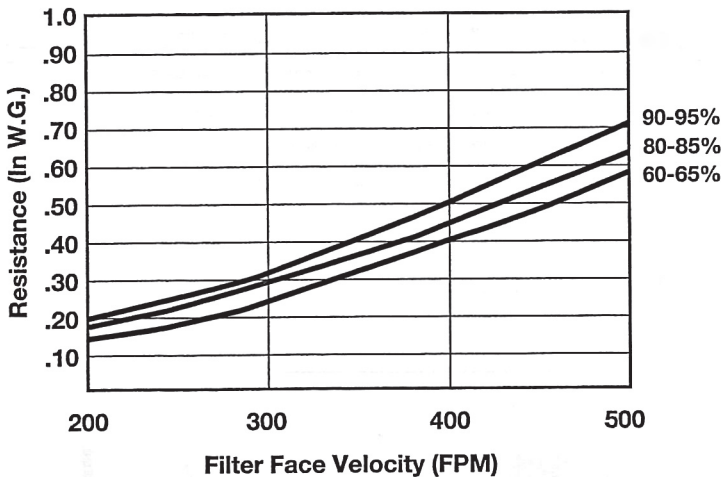
HT-500 (500°F)



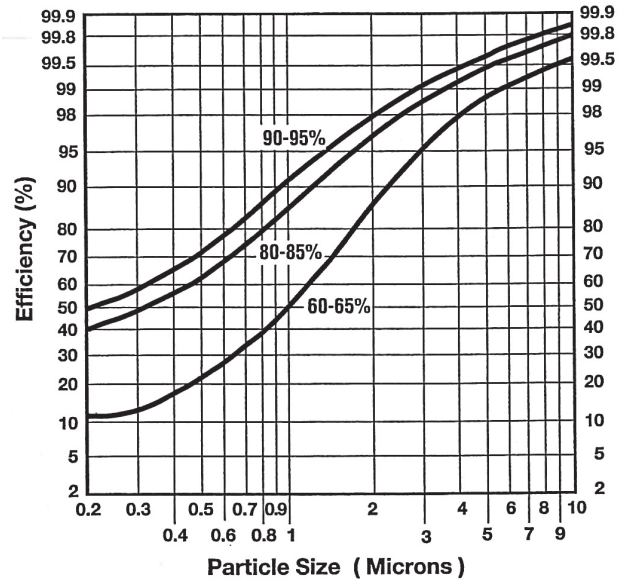
HT-750 (750°F)



HT-900 (900°F)



Efficiency by Particle Size



Underwriters Laboratories, Inc. Classification

Variflow HT filters are classified UL Standard 900 for flammability.

Operating Temperature Limit (Continuous)

500°F (260°C), 750°F (399°C) or 900°F (482°C)

A-VFLOWHT-1012



www.airguard.com



MADE IN THE USA



CLARCOR Air Filtration Products, Inc.
 100 River Ridge Circle • Jeffersonville, IN 47130
 Customer Service: 1-866-247-4827 • Fax: 1-800-784-3458
 Email: mailbag@airguard.com • www.airguard.com

Distributed by:

© 2012 CLARCOR Air Filtration Products.
 CLARCOR Air Filtration Products has a policy of continuous product research and development and reserves the right to change design and specifications without notice. Terms and Conditions of Sale can be accessed in the "LOGIN" section at www.airguard.com